

6000XB Automatic Barrier



**THE
CCTV
COMPANY**
YOUR SECURITY IS OUR PRIORITY

Part of the

6000 BARRIER RANGE

LEDs | Sensors

DESCRIPTION

- Aluminium extruded cabinet corners
- Removeable access doors on 3 sides
- 100% continuous duty cycle
- Single phase supply, 3 phase motor
- Two stage motor drive
- Inverter driven
- Adjustable acceleration and deceleration
- No springs or counterweights required
- Pre-wired loop detector bases for single channel safety and entry/exit control
- Heavy duty roller plunger limit switches
- Programmable control panel
 - c/w fault diagnostic on screen display
- Built in 8.2Ω safety edge controller
- Manual override in case of power failure
- Comes complete with M12 anchor bolts
- Heavy duty pillar block bearings

XB ADDED BENEFITS

- Monitored safety sensing edges
- LED strip boom lights
- Powerful turnbuckle drive
- Colours available on request
- Low maintenance
- Ease of installation

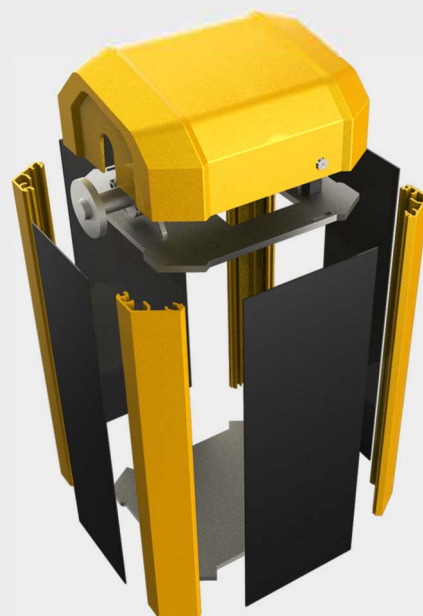
OPTIONAL EXTRAS

- Pogo tip support
- Magnetic lock
- Lorry Height Stop/ No Entry signs
- Articulated arm
- Plain pole up to 4M



LED BOOM LIGHTS

The 6000XB features red/green LED arm lights as standard.



INTERCHANGEABLE SIDES



FLEXIBLE COLOURS

Red with white, and black with yellow colours are standard with monitored safety edge. Custom cabinet colours are possible at extra cost. Includes complimentary LED lights.

6000XB Automatic Barrier

PRODUCT DESCRIPTION

Maximum Boom Length	4M plain pole only
Opening / Closing time	2 - 4 seconds (adjustments)
Power supply	Single phase 230v 25Hz
Drive unit	3 Phase motor & wormed gearbox
Finish	Aluminium & polyester powder coated
Accessories	Pre-wired loop detector bases
Springs / Counter weights	NOT REQUIRED
Cycles	100% continuous duty cycle rating
Safety edge controller	Direct connection of separate 8.2K Ω safety contact edge
Control panel	Programmable PCB & inverter driven
Boom diameter with LED	94mm x 64mm oval
Dimensions	1070mm x 370mm x 395mm
Ambient	-10 ~ 55 degree centigrade
Fixings	M12 anchor shield bolts included
Control panel IP rating	IP57
Settings	Programmable configuration as standard
Weight	Cabinet, contents and polearm: 65kg

